



Northville DDA Economic Development Committee

Thursday, July 13, 2023 – 3:30 am

Meeting Agenda:

1. Update on Bollards (Attachment 1)
 - A. Timing
 - B. Planters to augment bollards
2. Street Closure Options
 - A. Dining/Retail Structures – Design, funding, timing (Attachment 2.A)
 - B. The concept of Woonerf for Main Street – Shared streets, curbless streets (Attachment 2.B)
 - C. Loading/unload, deliveries
 - D. Planning Updates – Revised plans and estimates
3. Town Square (Attachment 3)
 - A. Vines, cables, irrigation, planter bed against west wall
 - B. Budgeted repairs – drinking
4. Next meeting – TBD



AMERISTAR®
SECURITY PRODUCTS



ATG ACCESS

Retractable **MANUAL BOLLARDS**



PROTECT YOUR INVESTMENT whether it is a driveway, estate entry, or car lot, you will have peace of mind with Ameristar's retractable security bollards. Our manual retractable bollards are a great visual deterrent that will limit access to garages, driveways, trailheads, or any other open property. With no power or infrastructure requirements, retractable bollards are an economical safety feature that can be easily installed on your next project.



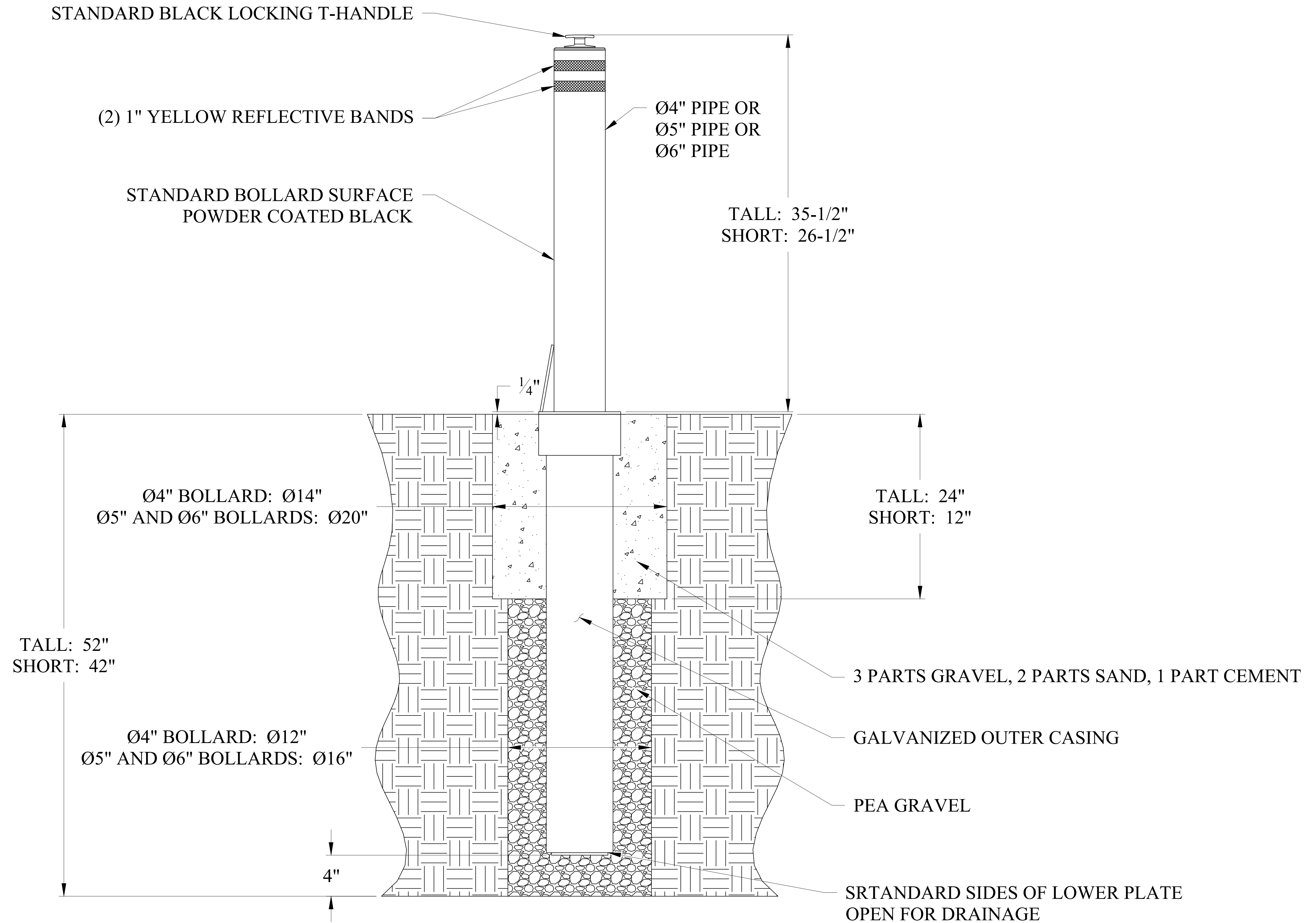
SECURITY PRODUCTS

AMERISTARSECURITY.COM | 866-467-2773

ASSA ABLOY, the global leader in door opening solutions

AMERISTAR®

ASSA ABLOY



Unless Noted Otherwise				PROPRIETARY INFORMATION	
.x	Decimal	± .040	DO NOT SCALE	This drawing is the proprietary property of AMERISTAR, Tulsa, OK and must not be duplicated or used in whole or in part for the making of drawings, prints or parts to the detriment of, or harm to, the owner. In accepting this drawing, the recipient agrees to keep the information contained confidential.	
.xx	Decimal	± .030	OFF DRAWING		
.xxx	Decimal	± .020			
.xxxx	Decimal	± .010	Angular ± 0.5°		
REVISION HISTORY					TITLE: GENERAL LAYOUT RMB
REV	ECN	AUTHOR	DATE	DESCRIPTION	
A		INIT	DATE	Initial Release	DATE: 04/03/18 SHEET: 1 of 1
					DRN BY: DM REV: A
					DRAWING NO: GENERAL LAYOUT RMB



AMERISTAR®

1555 N. Mingo
Tulsa, OK 74116
1-888-333-3422
www.ameristarfence.com

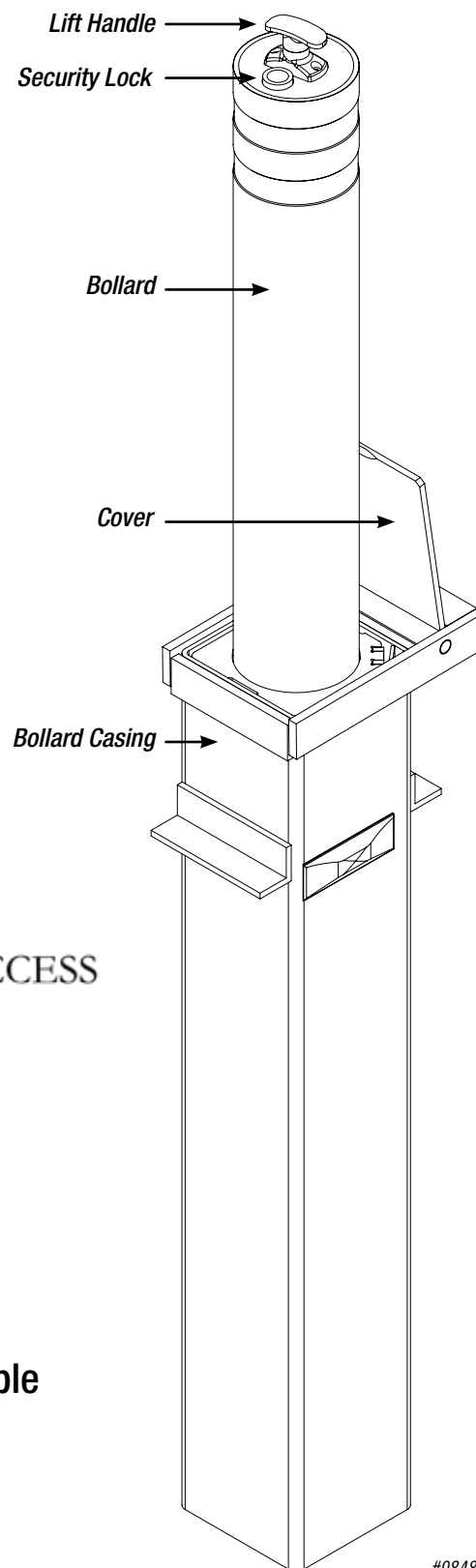
Retractable **MANUAL BOLLARDS**

Features:

Manual Operation with Lift Assist
Maintenance-Free Finish
No Power Required
Open Aesthetic Appearance
Reflective Bands for Visibility
Easy Installation

Applications:

Parking Lots & Structures
Trailheads for Parks & Recreation
Vehicle Dealership Entrances
Retail Store Fronts
School Driveways & Entrances
Office Buildings & Complexes
Residential Estate Driveways



BOLLARD OFFERING

- 4", 5" & 6" Diameters
- 24" & 36" Heights
- Black & Stainless Steel Finish options available

#9848 | REVISED 02/2018

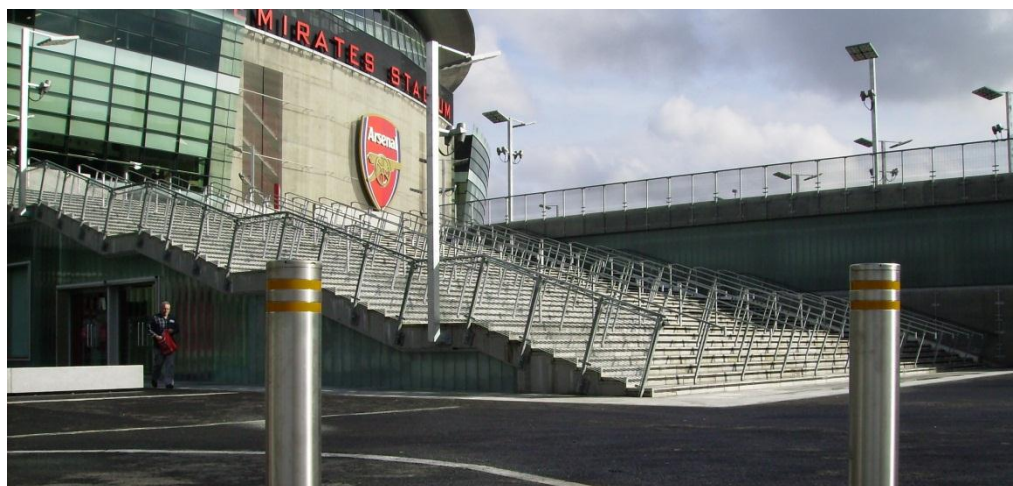


AMERISTAR
SECURITY PRODUCTS



ATG ACCESS

A DIVISION OF AMERISTAR FENCE PRODUCTS, INC.



Product Overview

- ❗ The only impact tested, manually operable bollard.
- ❗ Easy to operate as a lift assist mechanism is fitted as standard.
- ❗ A cost effective impact tested product suitable for sites considered 'low risk.'

SP100 – Manually Retractable, Fixed or Lift-Out

Statistics Table

Diameter	127mm/141 with sleeve
Height Above Ground	900mm
Lifting Weight	12kg (approx.)
Foundation Depth	1500mm
Finishes Available	Galvanized, RAL coated or a s/s sleeve
Security Rating	V/3,500(N1)48/90:2.8/0.0

Brief overview of product range:

The Ameristar SP100 is the most affordable anti-terrorism and high security solution to meet the BSI PAS 68 rating. This product is manually operable and requires no power, ducting or rebar.

Having successfully stopped a 3,500kg vehicle travelling at 48km/h (30mph) it is well placed to meet most perimeter security requirements. The bollard utilizes internal pneumatic assistance to make this robust product easy to operate by any user and no power is required for its operation.

Applications this product will protect:

The SP100 is ideal for commercial applications where budget is a primary constraint. This product is ideally suited to sites where there are few traffic movements. Users with high traffic volume will benefit from our range of automatic products.

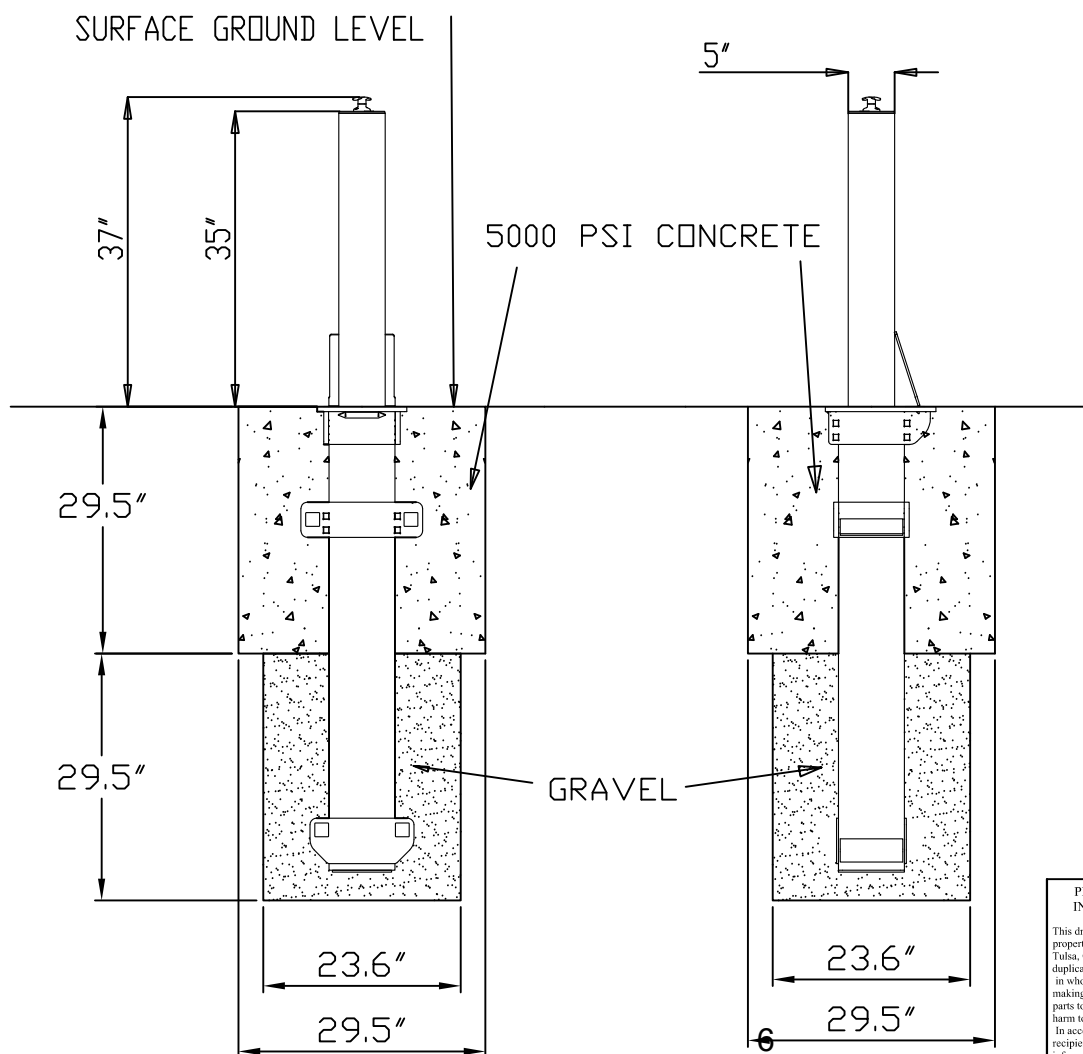
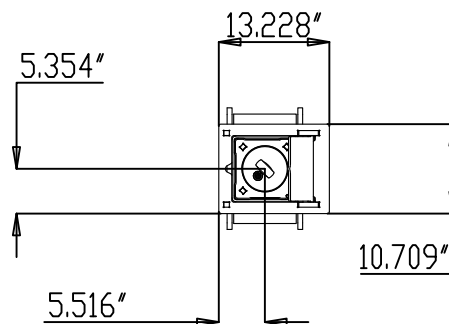


Duke of York's Residence



Emirates Stadium, London

DIMENSIONS ARE IN INCHES



PROPRIETARY INFORMATION
This drawing is the proprietary property of AMERISTAR, Tulsa, OK and must not be duplicated or used in whole or in part for the making of drawings, prints or parts to the detriment of, or harm to, the owner. In accepting this drawing, the recipient agrees to keep the information contained confidential.



AMERISTAR®



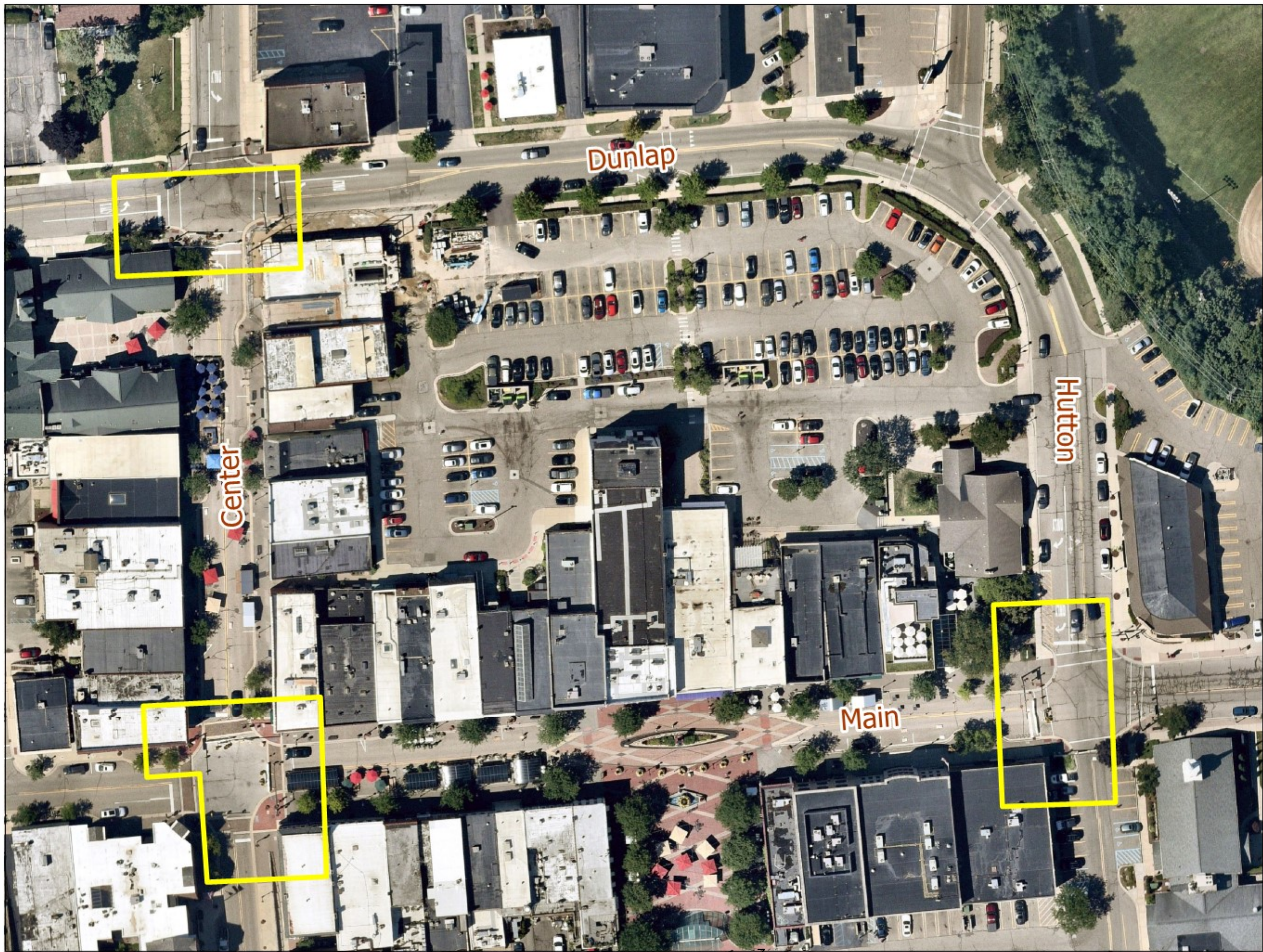
1555 N. Mingo
Tulsa, OK 74116
1-888-333-3422
www.ameristarfence.com


TITLE: SP100 INSTALLATION

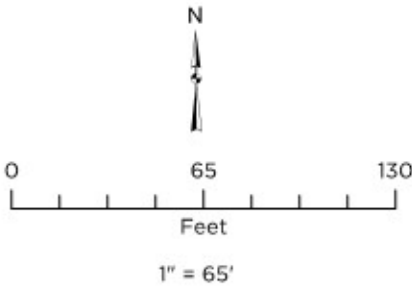
DATE:	SCALE:	SHEET: 1/1
DRN BY:	CHK BY: xxxxxxxx	REV: a

DRAWING NO:

Bollards Layout Downtown Northville Road Closures



 Road Closure Area



Source: Data provided by ESRI, Nearmap, The City of Northville and OHM Advisors. OHM Advisors does not warrant the accuracy of the data and/or the map. This document is intended to depict the approximate spatial location of the mapped features within the Community and all use is strictly at the user's own risk.

Coordinate System: NAD 1983 2011 StatePlane Michigan South FIPS 2113 F4 (m)

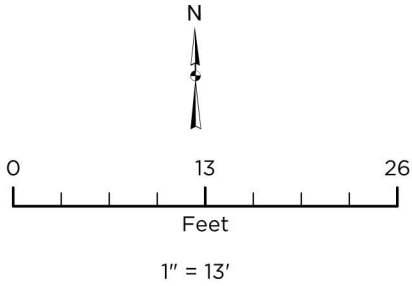
Map Published: May 19, 2023



Bollards Layout
Main St & Center St

- LEGEND
- CONCRETE PLANTER
 - MANUALLY RETRACTABLE BOLLARD WITH REFLECTIVE BANDS

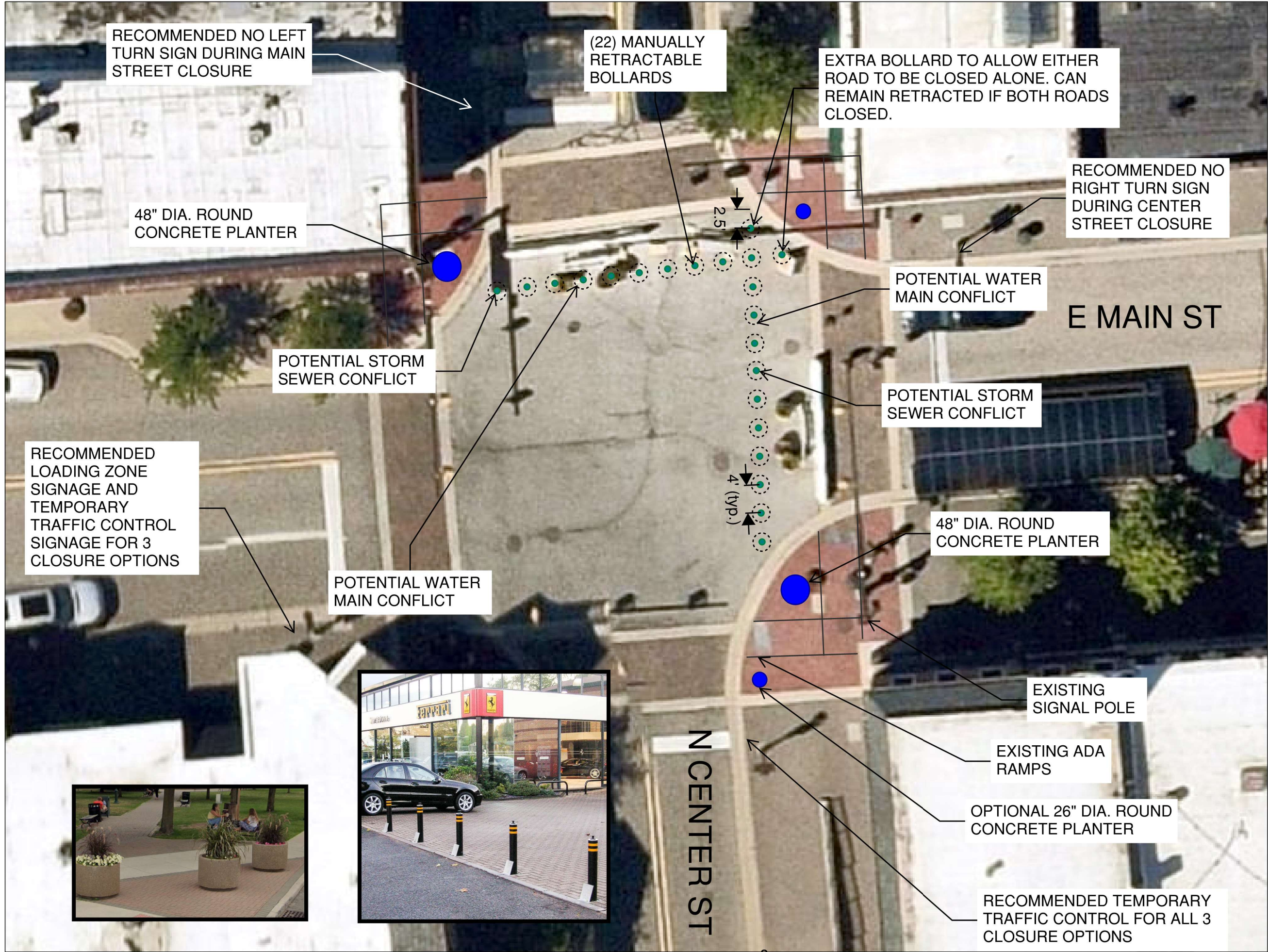
- NOTES:
1. CONCRETE FOUNDATION FOR BOLLARDS TO BE 30" DIAMETER 30" DEEP WITH TOTAL BOLLARD EMBEDMENT OF 60".
 2. POTENTIAL UTILITY CONFLICTS TO BE CONFIRMED WITH SURVEY AND/OR POTHOLING PRIOR TO CONSTRUCTION.
 3. RETRACTABLE BOLLARDS ARE CRASH RATED FOR A 7,000 LB VEHICLE TRAVELING 30 MPH. BOLLARDS HAVE A LIFTING WEIGHT OF 26 LBS FOR EMERGENCY ACCESS AND ARE LOCKABLE.



Source: Data provided by ESRI, The City of Northville, Nearmap and OHM Advisors. OHM Advisors does not warrant the accuracy of the data and/or the map. This document is intended to depict the approximate spatial location of the mapped features within the Community and all use is strictly at the user's own risk.

Coordinate System: NAD 1983 2011 StatePlane Michigan South FIPS 2113 Ft Intl

Map Published: May 19, 2023



LEGEND

- NOTES:

-

Map Published: May 19, 2023



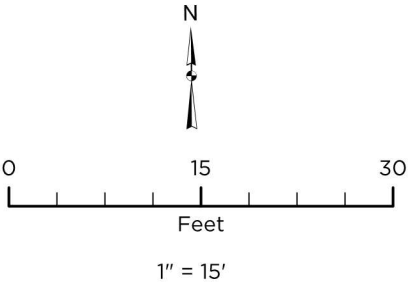
Bollards Layout
Main St and Hutton St

LEGEND

- CONCRETE PLANTER
- MANUALLY RETRACTABLE BOLLARD WITH REFLECTIVE BANDS

NOTES:

1. CONCRETE FOUNDATION FOR BOLLARDS TO BE 30" DIAMETER 30" DEEP WITH TOTAL BOLLARD EMBEDMENT OF 60".
2. POTENTIAL UTILITY CONFLICTS TO BE CONFIRMED WITH SURVEY AND/OR POTHOLING PRIOR TO CONSTRUCTION.
3. RETRACTABLE BOLLARDS ARE CRASH RATED FOR A 7,000 LB VEHICLE TRAVELING 30 MPH. BOLLARDS HAVE A LIFTING WEIGHT OF 26 LBS FOR EMERGENCY ACCESS AND ARE LOCKABLE.



Source: Data provided by ESRI, The City of Northville, Nearmap and OHM Advisors. OHM Advisors does not warrant the accuracy of the data and/or the map. This document is intended to depict the approximate spatial location of the mapped features within the Community and all use is strictly at the user's own risk.

Coordinate System: NAD 1983 2011 StatePlane Michigan South FIPS 2113 Ft Intl

Map Published: May 19, 2023



888.522.6711 | ohm-advisors.com

RECOMMENDED LANE CLOSURE
AND TRAFFIC CONTROL SIGNS

HUTTON ST



48" DIA. ROUND
CONCRETE PLANTER

EXISTING ADA
RAMPS

EX. WATER MAIN
GATE WELL

RECOMMENDED
TRAFFIC CONTROL
SIGNAGE

E MAIN ST

37'

4' (typ.)

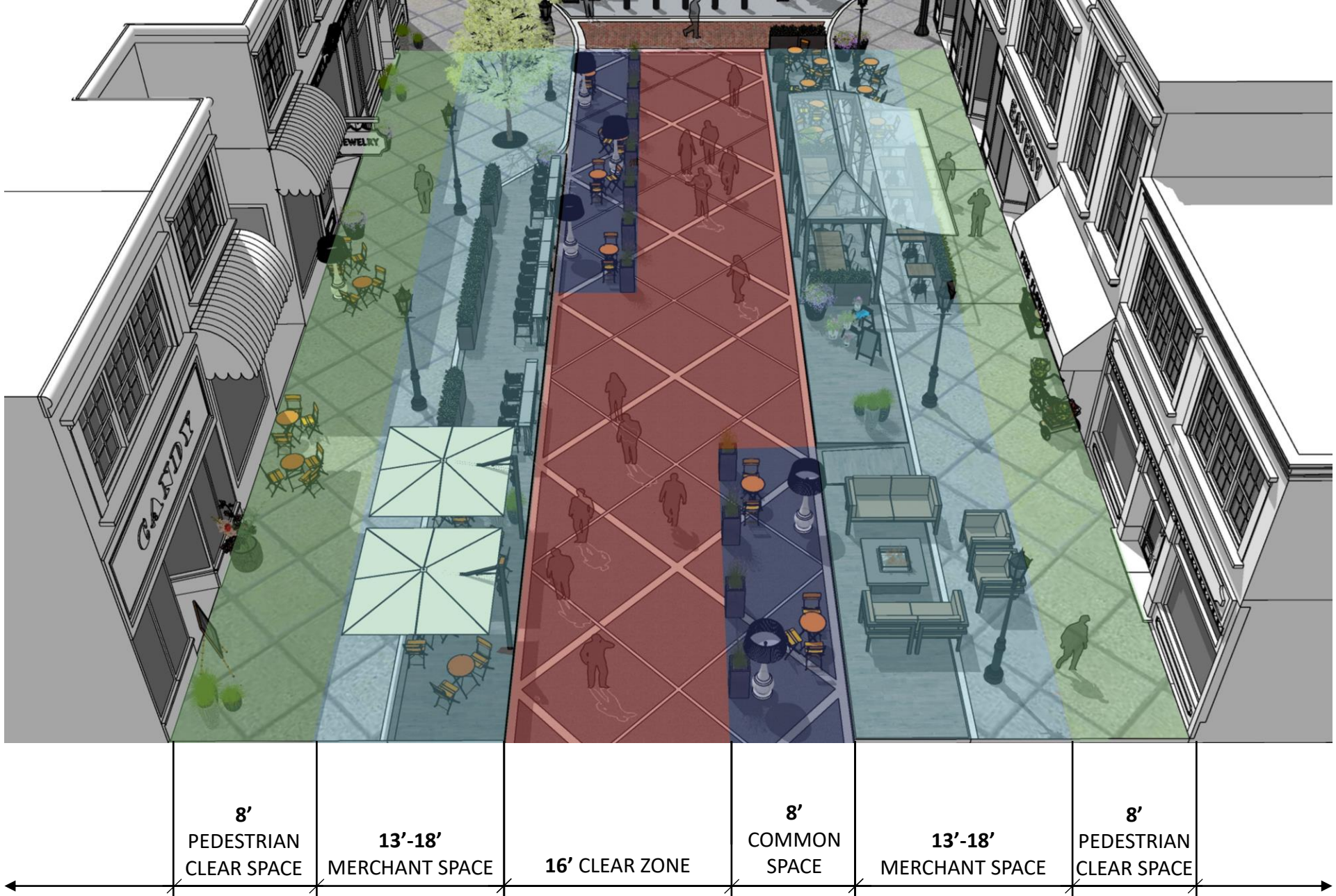
2.5'

(9) MANUALLY
RETRACTABLE
BOLLARDS

26" DIA. ROUND
CONCRETE PLANTER

RECOMMENDED NO
LEFT TURN SIGN





TYPICAL STREET SECTION

REMOVABLE PANELS ADDED
TO ENCLOSE DURING WINTER



STRUCTURES (WINTER)

TRANSPARENT TOP TO
MAINTAIN VIEWS OF SIGNAGE



RAILING BETWEEN DINING
AND STREET

OPTIONAL AWNING
.....



METAL FRAMED STRUCTURE

STRUCTURES

